



Africa Oral Genealogies & Family Histories Project

Scanner Setup

Preliminary Preparation

1. After removing the scanner from the box, remove all plastic tabs from the scanner.
2. Plug the power cord into the back of the scanner and connect with the outlet. Do **not** plug the USB cable into the back of the scanner and your computer. You will connect the scanner to your computer *after* you have installed the scanner software.
3. Lift the scanner lid, extend the paper guide and the output tray.

Install Software

Note: must be connected to the internet to download software.

1. Make sure the scanner is **not** connected to your computer. If you have connected the scanner to a Windows computer and see a “Found New Hardware” screen, click **cancel** and disconnect the USB cable.
2. On your computer, download the software for your scanner from the link below:

[DS-575W Model](#)

[DS-860 Model](#)

3. Expand the drivers tab and download the “Scanner Driver and EPSON Scan Utility”.



Epson WorkForce DS-575W

Model: B11B228202 | [Product Home](#)

| Downloads | FAQs | Manuals and Warranty | Videos | Registration and Service Plans | Contact Us |
|---|---------|---------------------------|--------|--------------------------------|------------|
| Operating System: Windows 10 64-bit (detected) | | | | | |
| Recommended For You + | | | | | |
| Drivers - | | | | | |
| Drivers and Utilities Combo Package + | | | | | |
| 08/10/18 | 427 MB | DS575W_Combo_NA.exe | | Download | |
| Scanner Driver and Epson Scan 2 Utility v6.4.8.1 + | | | | | |
| 04/12/18 | 49.2 MB | DS575W_EScan2_6481_NA.exe | | Download | |





Model: B11B222201 | Product Home

Epson WorkForce DS-860

Downloads | FAQs | Manuals and Warranty | Videos | Registration and Service Plans | Contact Us

Operating System: Windows 10 64-bit (detected)

Drivers

Scanner Driver and EPSON Scan Utility v5.3.2.3 +

07/17/18 | 27.9 MB | DS860_DS860_EScan_5323_AM.exe

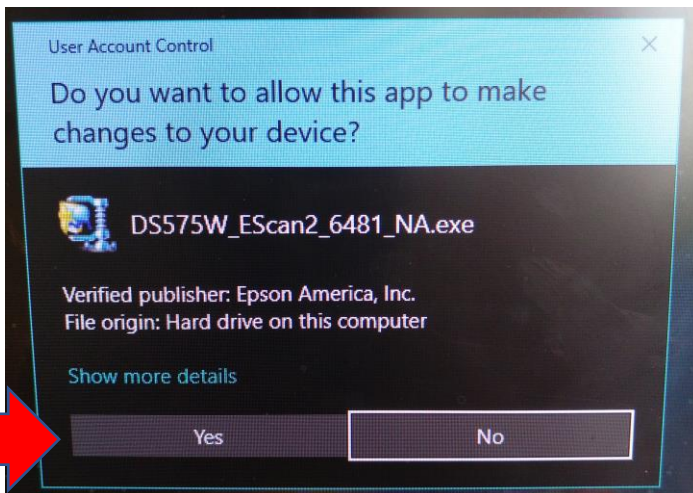
Download

ISIS Scanner Driver v1.6.11708.2001 +

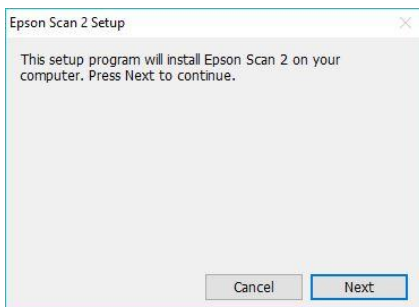
01/25/18 | 17.6 MB | DS860_ISIS_1_6_11708_2001_AM.exe

Download

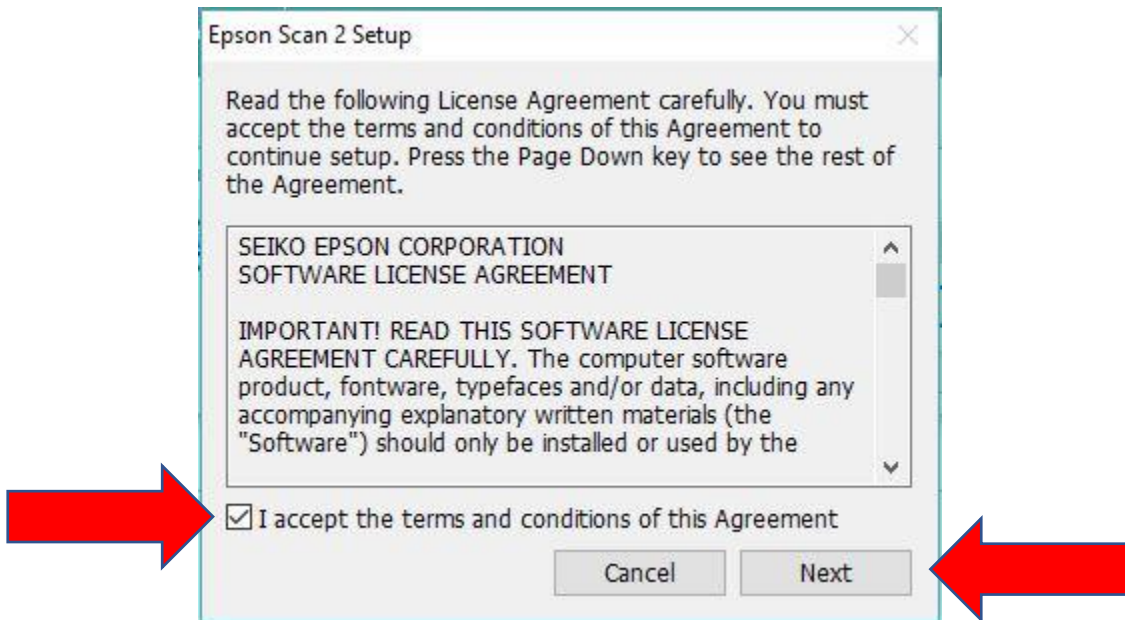
4. Double-click on the software package you downloaded in the previous step. The file will be located in the downloads folders.
5. A new window will appear titled "User Account Control." Click yes.



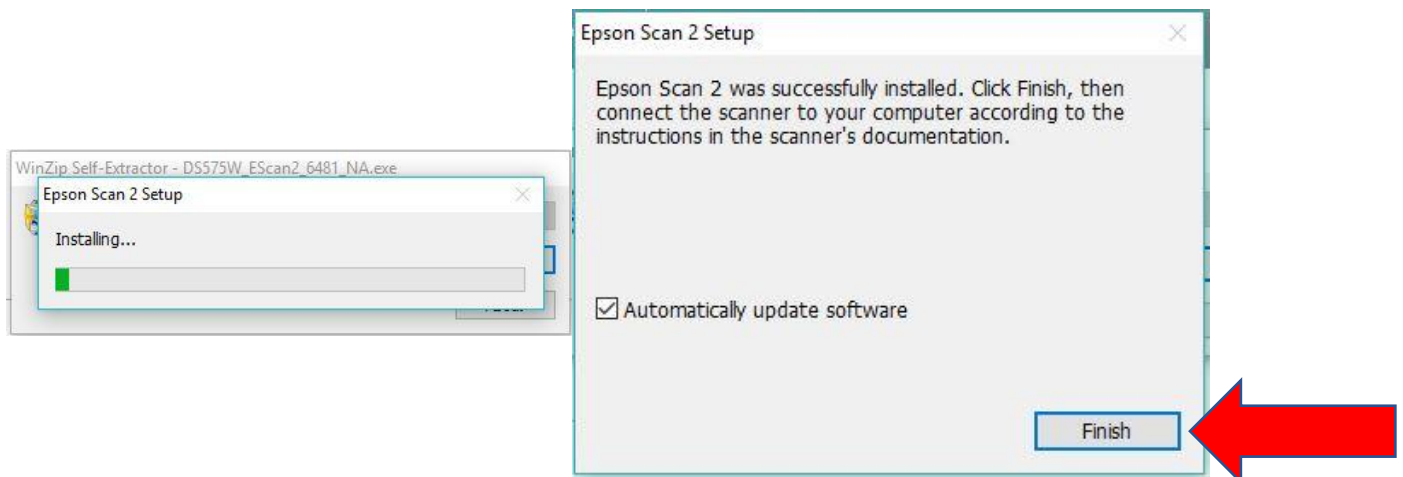
6. A new window will appear with a progress bar. Wait until the progress bar finishes loading and a new window will appear. Click next.



7. A new window will appear showing the terms and conditions. You cannot continue unless you accept the terms and conditions. Click the checkbox to show you accept the terms and conditions then click next.

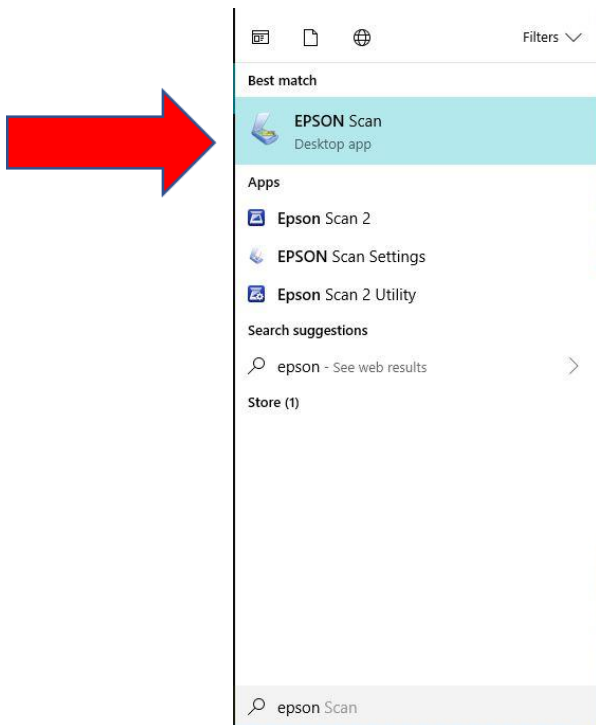


8. Another progress bar will appear. Once the progress bar has finished loading, a new window will appear. Click finish.

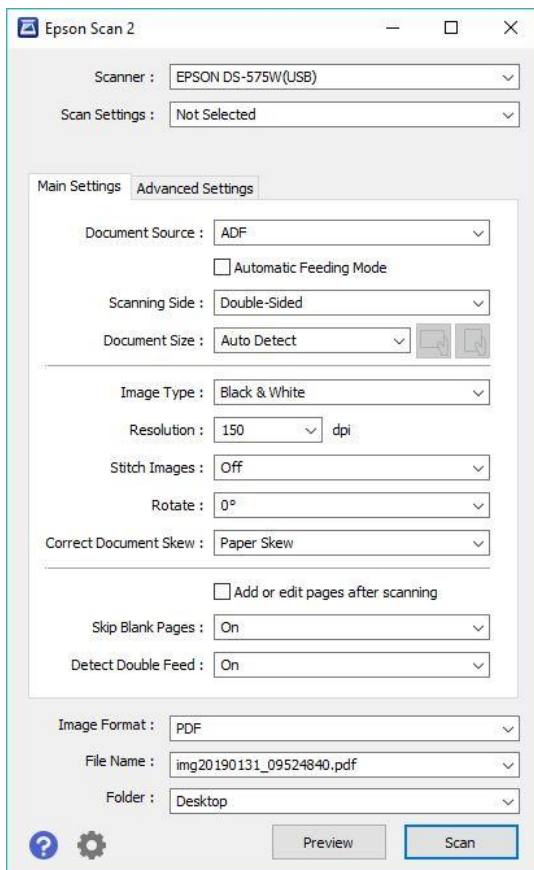


9. Turn on the scanner. Then plug the USB cable into your computer.

10. On your computer, use the search bar in the bottom left corner of your screen to search for “EPSON.” Select “EPSON Scan”

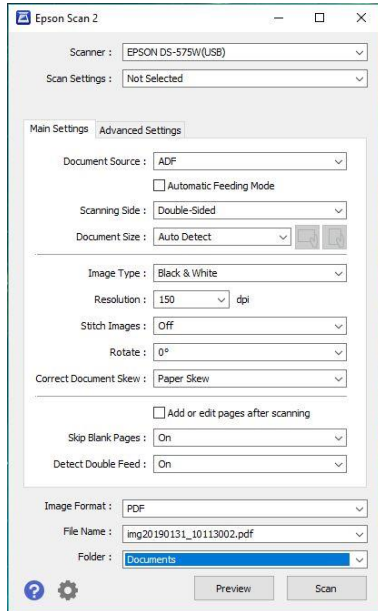


11. The computer will connect with the scanner. Then, you will see the EPSON Scan software window on the screen.



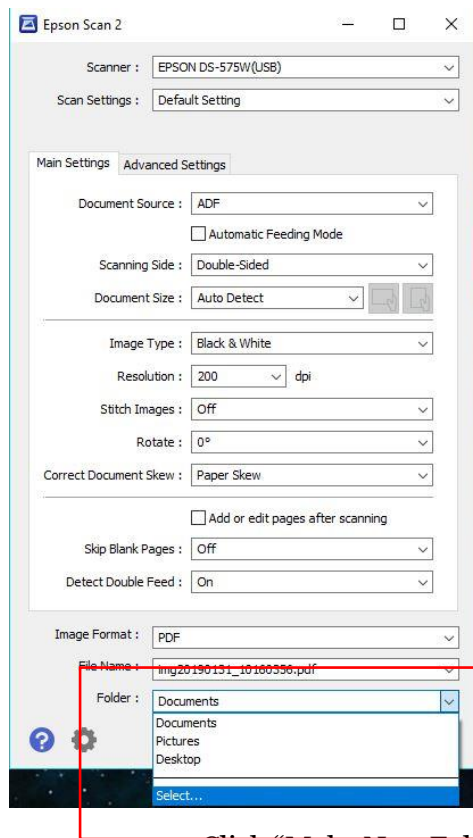
12. Next you will set up the scanner software settings:

- a. Change the Resolution to 150 dpi
- b. Make sure Skip Blank Pages is On
- c. Check the “Add or edit pages after scanning” box.



13. Set up the scanned document folder:

- a. Click the arrow on the folder section of the Epson Scan software window.
- b. Click select. Then click desktop.



- c. Click "Make New Folder".
- d. Name the folder. Click OK.

